



TK SERIES

HDD GUIDANCE SYSTEM

On the jobsite, interference is everywhere, created by many sources: metal fences, radio signals, underground and overhead utilities, nearby buildings and more. With the **Subsite® TK Series Hdd Guidance System**, you can cut through the noise and complete bores with an unprecedented level of confidence, thanks to its dual locating methods (walkover and DrillTo™), four-frequency beacon, a depth range of up to 110 feet (33.5 m), high-contrast graphics and much more.



KEY FEATURES

- Two locating methods let you use your preferred method of locating, while using the second method to verify your results.
 - 1) Walkover enables the operator to pinpoint drill head location with peak and null techniques.
 - 2) Time-saving DrillTo™ mode enables the drill operator to make real-time corrections to improve bore accuracy or avoid obstacles.
- Ergonomic upright design reduces fatigue.
- TSR Mobile software provides As Built report of completed bore path.
- Bore-path analyzer software shows which frequency works best for your particular job and conditions.
- Simple, four-button layout is easy to learn and simple to use. High-contrast screen for easy readability in any light.
- Up to four frequencies in a single beacon to help you avoid signal interference.
- Walkover tracking up to 110 feet is deeper than anything else available. The long 2,000-foot range between the tracker and drill operator helps keep you more productive.



TK SERIES HDD GUIDANCE SYSTEM

TK Series trackers provide a deeper locate range – greater than any competing tracker today (up to 110 ft).

TK SERIES HDD GUIDANCE SYSTEM SPECIFICATIONS

TRACKER

Dimensions	13 x 7 x 30 in. (330 x 178 x 762 mm)
Weight (with battery)	9 lbs (4.1 kg)
Operating temperature	-4 to 140°F
Environmental rating	IP65
Power source	C-Cell alkaline or NiMH rechargeable
Battery life	10-12 hours
Display	Hi-resolution graphic
Audio output	Speaker
Telemetry Range	2000 ft (610 m)
Telemetry channels	4-14
Accuracy	+/- 5% over testable range
Depth range	≥ 110 ft (depends on beacon power)

TK TRACKER

Receiving frequencies	29 kHz
Depth with B pwr beacon	≥ 40 ft (12.2 m)
Depth with H pwr beacon	≥ 70 ft (21.3 m)
Depth with X pwr beacon	≥ 75 ft (22.8 m)

TK_Q TRACKER

Receiving frequencies	12 or 29 kHz
Depth with B pwr beacon	≥ 60 ft (18.3 m)
Depth with H pwr beacon	≥ 110 ft (33.5 m)
Depth with X pwr beacon	≥ 115 ft (35 m)

TK_Q TRACKER

Receiving frequencies	1.5, 12, 20 or 29 kHz
Depth with B pwr beacon	w/ 12, 20, 29 kHz; ≥ 70 ft (21.3 m)
Depth with H pwr beacon	w/ 1.5 kHz; ≥ 70 ft (21.3 m)
Depth with H pwr beacon	w/ 12, 20, 29 kHz; ≥ 110 ft (33.5 m)
Depth with X pwr beacon	w/ 12, 20, 29 kHz; ≥ 115 ft (35 m)

DISPLAY

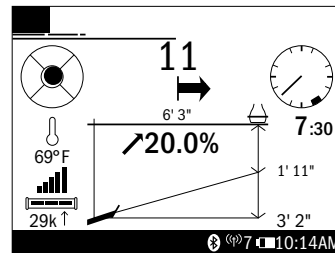
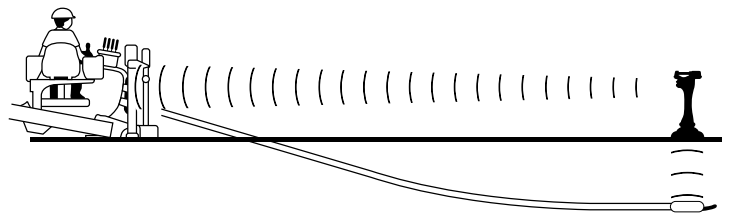
Operating temperature	-4 to 140°F
Environmental rating	IP65
Power source	Powered off the HDD unit power
Display	Hi-resolution graphic
Telemetry Range	2000 ft (610 m)
Telemetry channels	4-14

TDR REMOTE DISPLAY

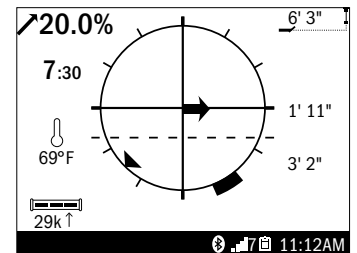
Dimensions	6 x 6 x 6 in. (152.4 x 152.4 x 152.4 mm)
------------	--

TD IN-DASH DISPLAY

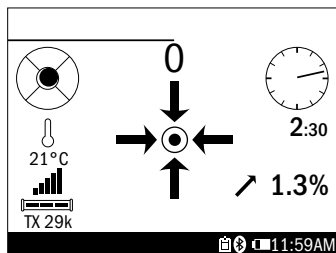
Dimensions	7 x 7 x 6.5 in. (177.8 x 177.8 x 165.1 mm)
------------	--



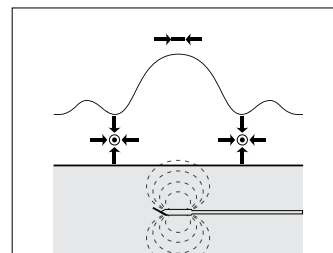
DrillTo™ Tracker



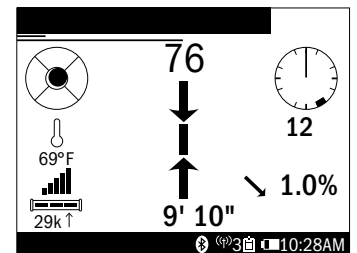
DrillTo™ Remote Display



Walkover Null Locate



Null and Peak Regions



Walkover Peak Locate

Specifications are general and subject to change without notice. If exact measurements are required, equipment should be weighed and measured. Due to selected options, delivered equipment may not necessarily match that shown.

©2021 The Charles Machine Works, Inc.